

# PET Name Tags - All Sizes

The following templates are for our range of printed rPET plastic name tags:

See: <https://ezitag.com/product-category/name-tags/pocketless-plastic/>

Single Side & duplicate names on the reverse need to only use the 'FRONT' template - one artwork only

## Tips for your Name Tag Artwork

Vector or high res logos give the best print results

Outline generic text or provide us with the font files

Embed any images

**DO NOT** outline your variable data - we need to know what font & size you would like your data

Text and Logos need to be inside the critical area print lines

Position of your variable data (names etc) will change depending on your final data merge

Templates show slot position which is the same for the hole option (not critical print in this area of the name tag)

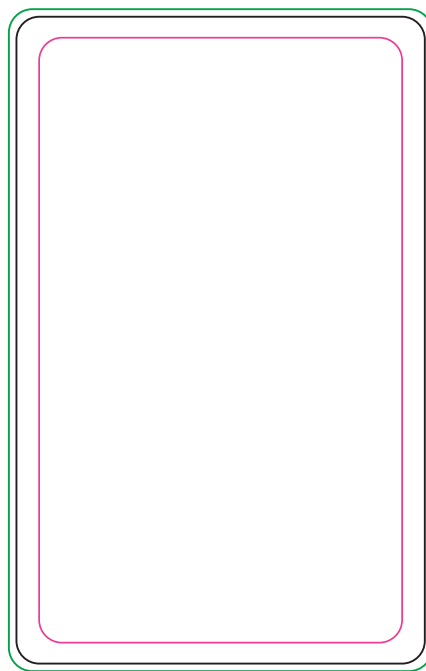
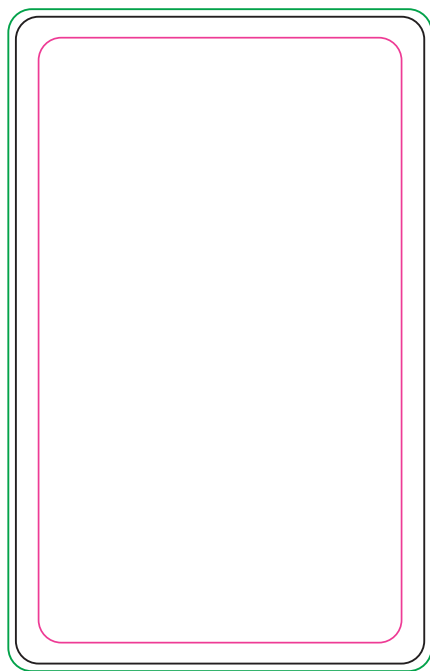
#1	PTU001	Plastic Card PET Tag 85.6 x 54mm	#8	PTU012	Plastic Card PET Circle 75mm
#2	PTU002	Plastic Card PET Tag 95 x 113mm Slot	#9	PTU016	Plastic Card PET Tag 105 X 74mm
#3	PTU003	Plastic Card PET Tag 95 x 113mm Double Slot	#10	PTU016	Plastic Card PET Tag 74 x 105mm
#4	PTU004	Plastic PET Staff Badge 75 x 27mm	#11	PTU016	Plastic Card PET Tag 74 x 106mm Slot
#5	PTU006 & PTU007 Plastic PET Tags		#12	PTU017	Plastic PET KeyTag 28.5 x 54mm Hole
#6	PTU010	Plastic PET Rectrangle 85.54 x 54mm Hole	#13	PTU018	Plastic PET Circle 50mm
#7	PTU010	Plastic PET Rectangle 85.54 x 54mm Slot			

# #1 PTU001 Plastic Card PET Tag 85.6 x 54mm

Clip, Pin or Magnet or Card Only

FRONT

REV (if applicable)

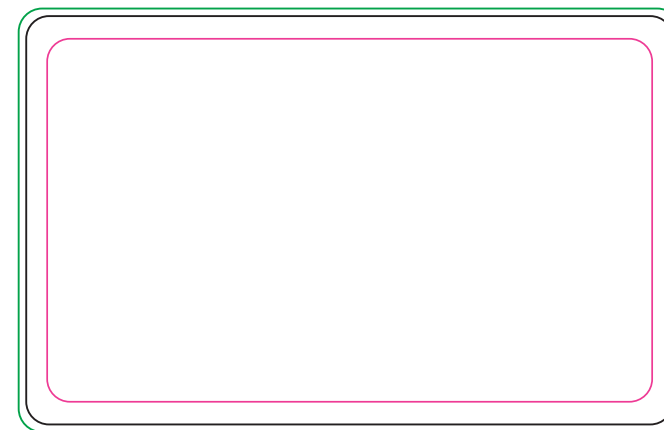


Final Product Size- 85.6mm x 54mm

FRONT



REV (if applicable)



Pink Line\_ Critical imprint area  
Black Line\_ Final product size  
Green Line\_ Bleed print area

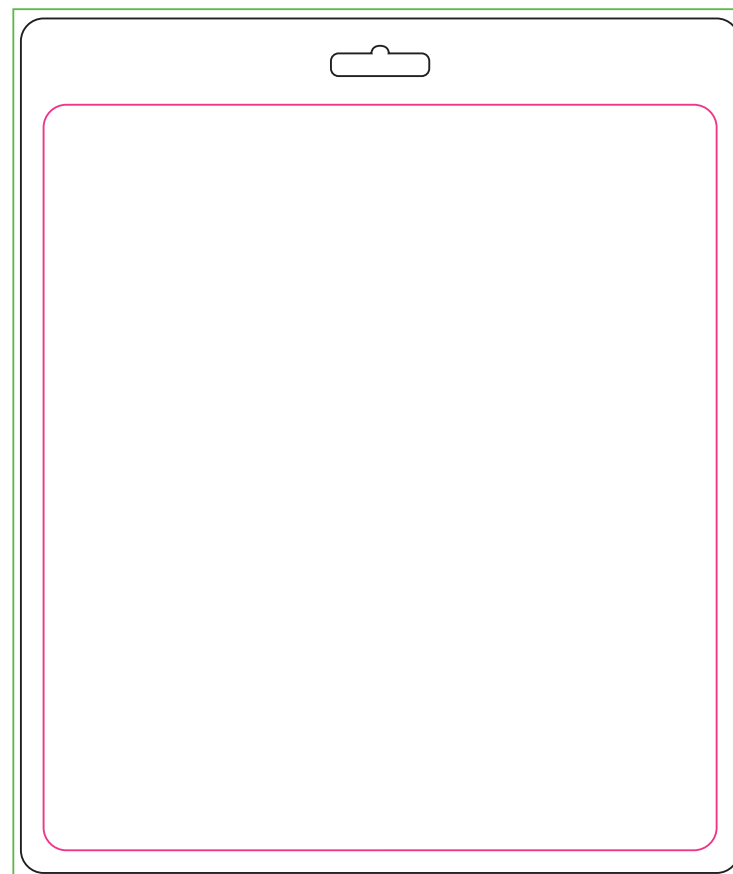
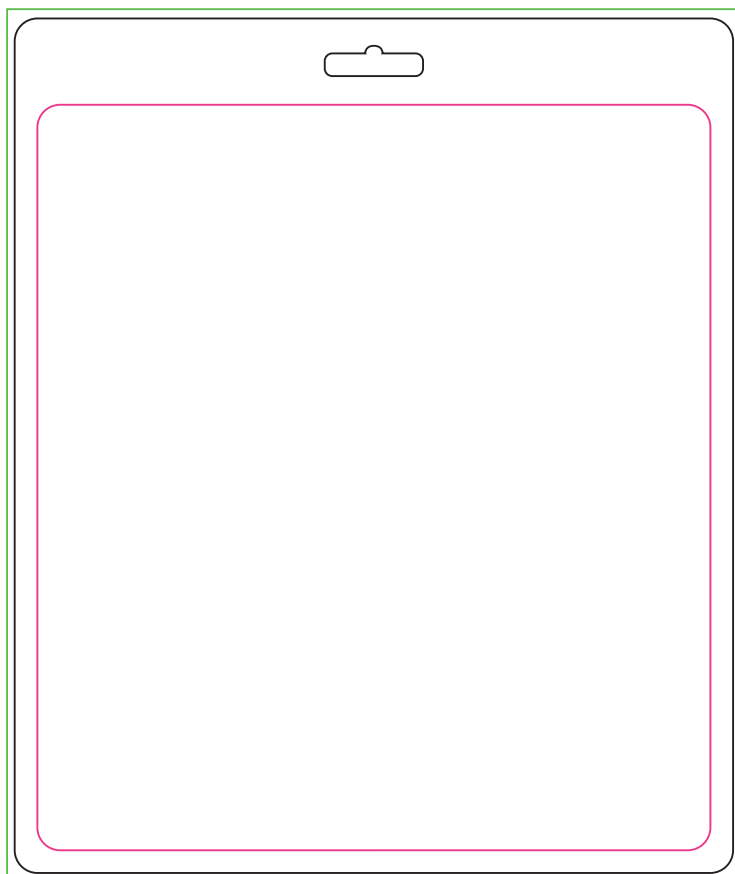
**Art shown @ 100%**

***The template is a GUIDE ONLY. Our graphics team will set up the print proof and make adjustments to ensure the highest quality.***

## #2 PTU002 Plastic Card PET Tag 95 x 113mm Slot

FRONT

REV (if applicable)



Final Product Size- 95mm W x 113mmH

Pink Line\_ Critical imprint area  
Black Line\_ Final product size  
Green Line\_ Bleed print area

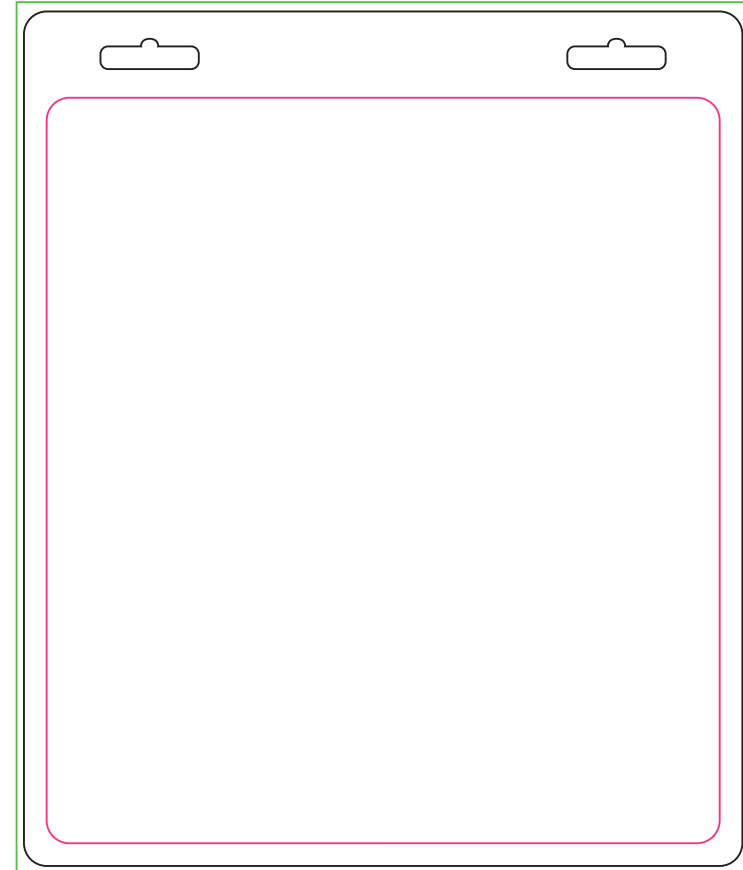
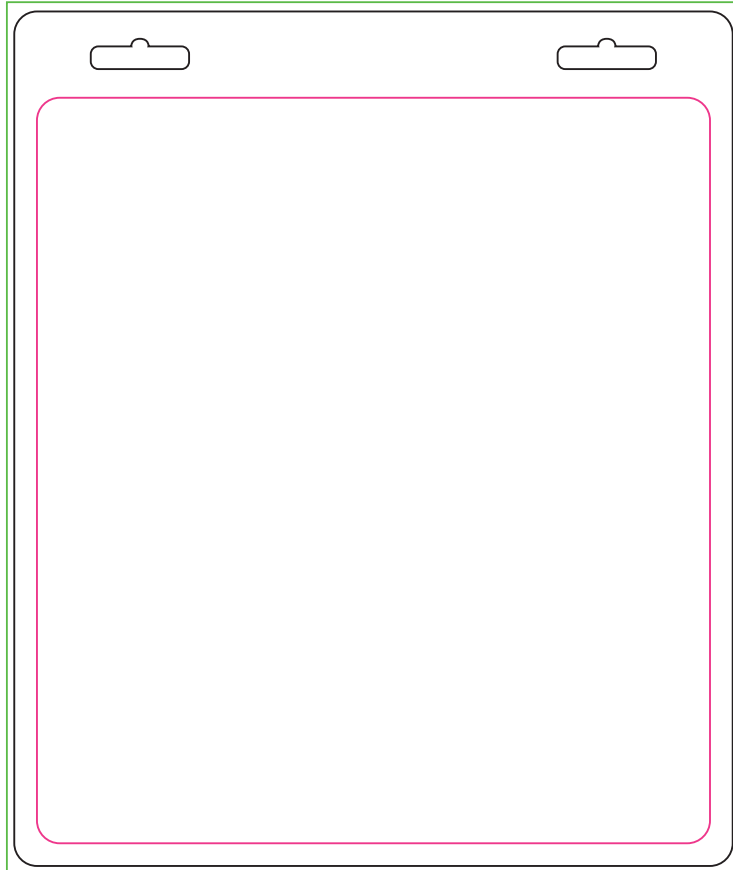
**Art shown @ 100%**

***The template is a GUIDE ONLY. Our graphics team will set up the print proof and make adjustments to ensure the highest quality.***

# #3 PTU002 Plastic Card PET Tag 95 x 113mm Double Slot

FRONT

REV (if applicable)



Final Product Size- 95mm W x 113mmH

Pink Line\_ Critical imprint area  
Black Line\_ Final product size  
Green Line\_ Bleed print area

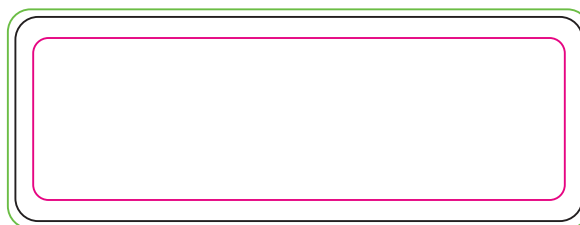
**Art shown @ 100%**

***The template is a GUIDE ONLY. Our graphics team will set up the print proof and make adjustments to ensure the highest quality.***

# #4 PTU004 Plastic PET Staff Badge 75 x27mm

FRONT

Clip, Pin or Magnet or Card Only



Final Product Size- 74mm W x 105mmH

Pink Line\_ Critical imprint area

Black Line\_ Final product size

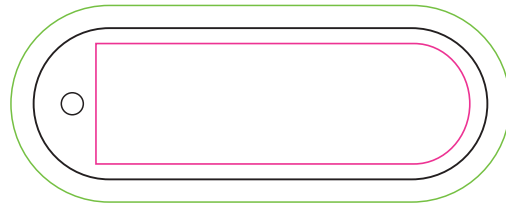
Green Line\_ Bleed print area

**Art shown @ 100%**

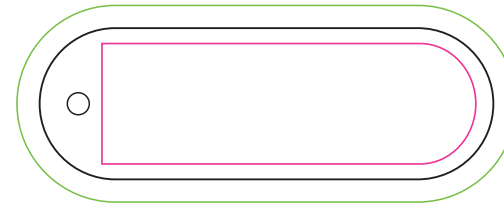
***The template is a GUIDE ONLY. Our graphics team will set up the print proof and make adjustments to ensure the highest quality.***

# #5 PTu006 & PTU007 Plastic PET Tags

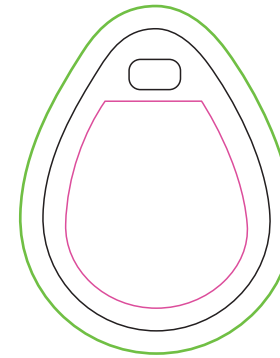
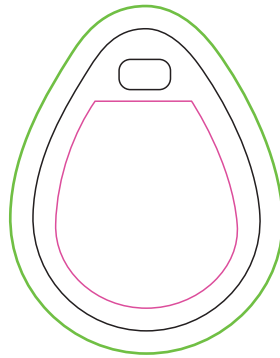
FRONT



REV (if applicable)



Final Product Size-20mm H x 60mmW



Final Product Size 40mm H x 30mmW

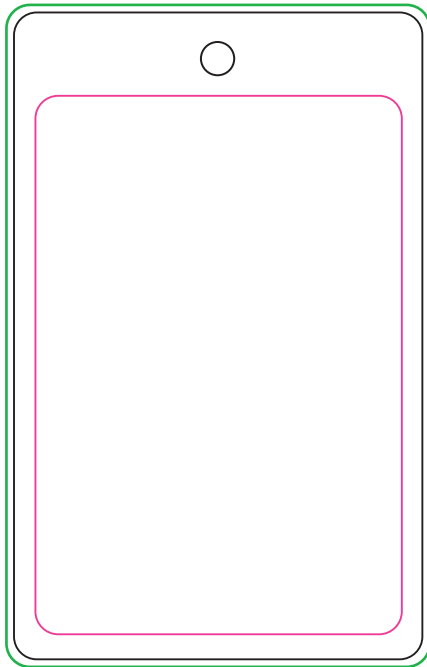
Pink Line\_ Critical imprint area  
Black Line\_ Final product size  
Green Line\_ Bleed print area

**Art shown @ 100%**

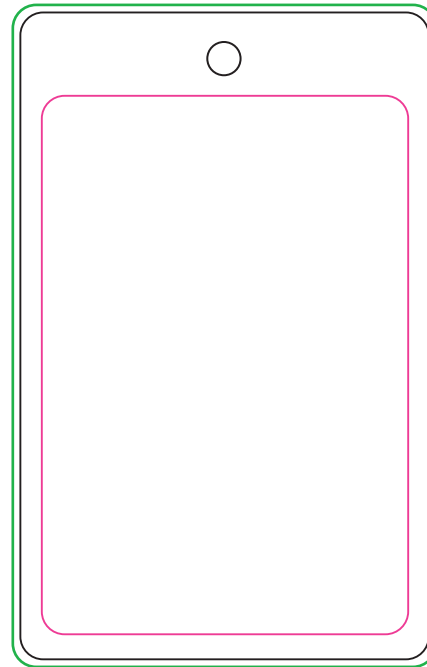
***The template is a GUIDE ONLY. Our graphics team will set up the print proof and make adjustments to ensure the highest quality.***

# #6 PTU010 Plastic PET Rectangle 85.54 x 54mm Hole

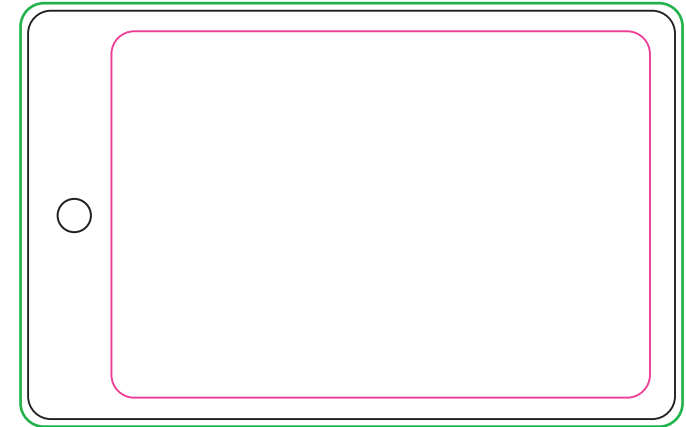
FRONT



REV (if applicable)



FRONT



REV (if applicable)



Final Product Size- 54mm W x 85.54mmH

Pink Line\_ Critical imprint area  
Black Line\_ Final product size  
Green Line\_ Bleed print area

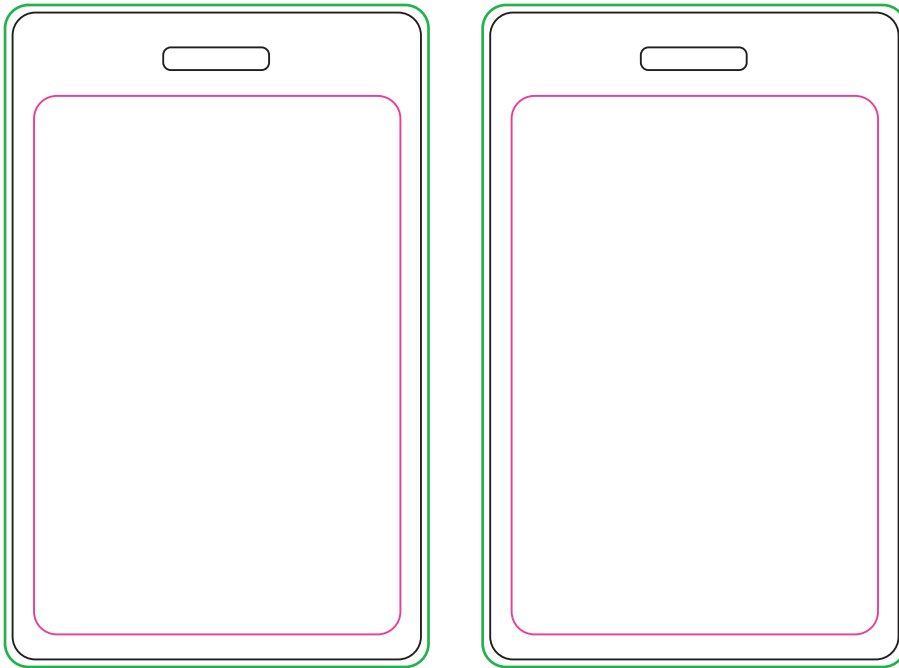
**Art shown @ 100%**

***The template is a GUIDE ONLY. Our graphics team will set up the print proof and make adjustments to ensure the highest quality.***

# #7 PTU010 Plastic PET Rectangle 85.54 x 54mm Slot

FRONT

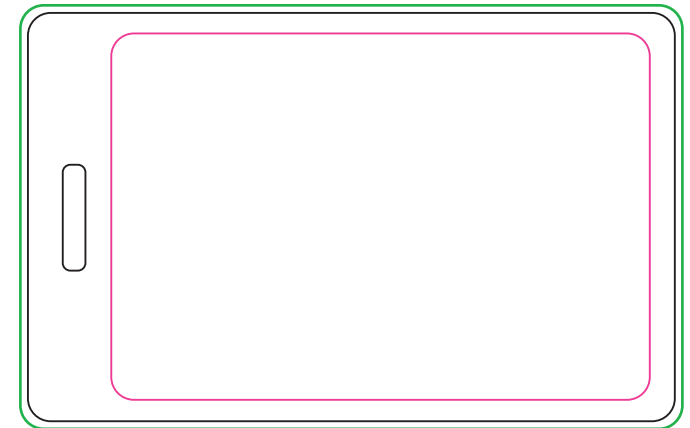
REV (if applicable)



FRONT



REV (if applicable)



Final Product Size- 54mm W x 85.54mm H

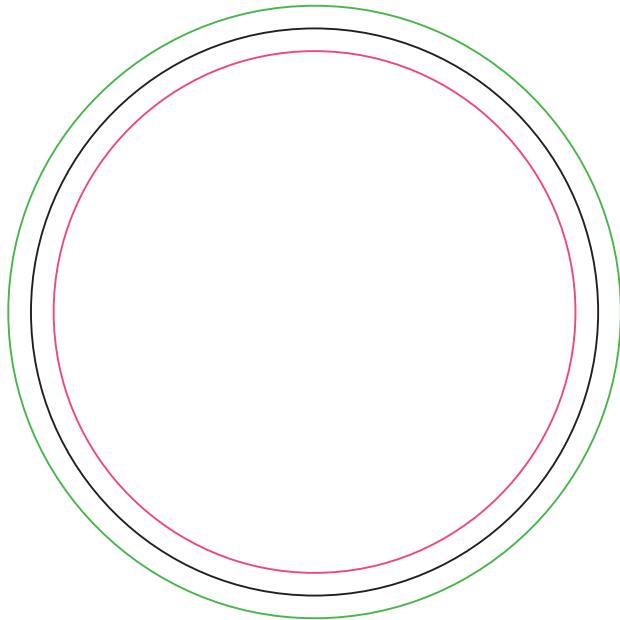
Pink Line\_ Critical imprint area  
Black Line\_ Final product size  
Green Line\_ Bleed print area

**Art shown @ 100%**

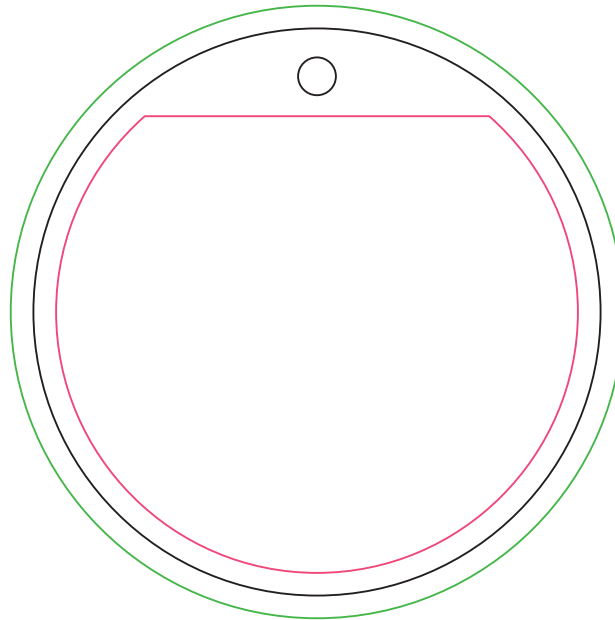
***The template is a GUIDE ONLY. Our graphics team will set up the print proof and make adjustments to ensure the highest quality.***



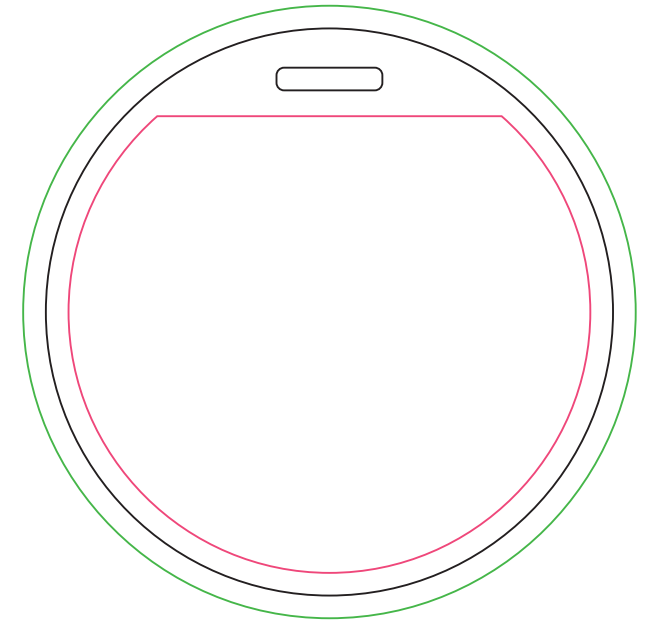
## #8 PTU012 Plastic PET Circle 75mm



Clip, Pin or Magnet or Card Only



Final Product Size- 75mm H x 75mm W



Pink Line\_ Critical imprint area  
Black Line\_ Final product size  
Green Line\_ Bleed print area

**Art shown @ 100%**

***The template is a GUIDE ONLY. Our graphics team will set up the print proof and make adjustments to ensure the highest quality.***

# #9 PTU016 Plastic Card PET Tag 105 x 74mm

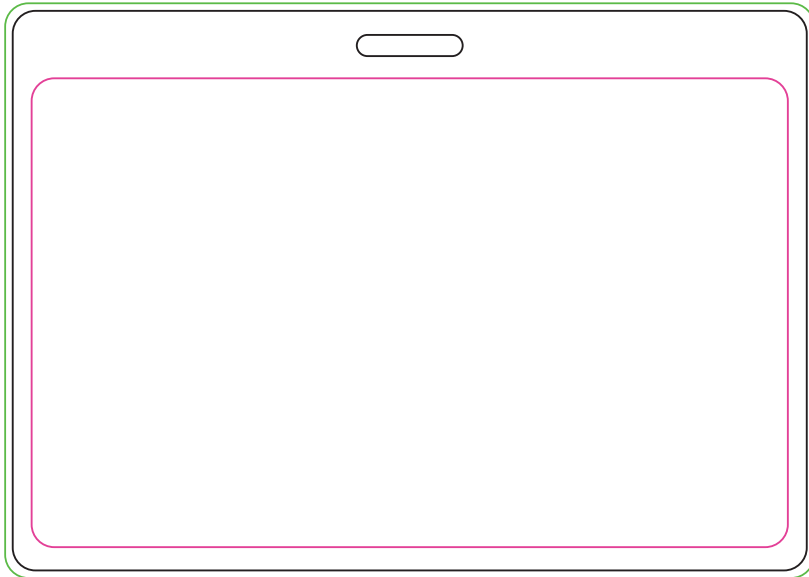
FRONT



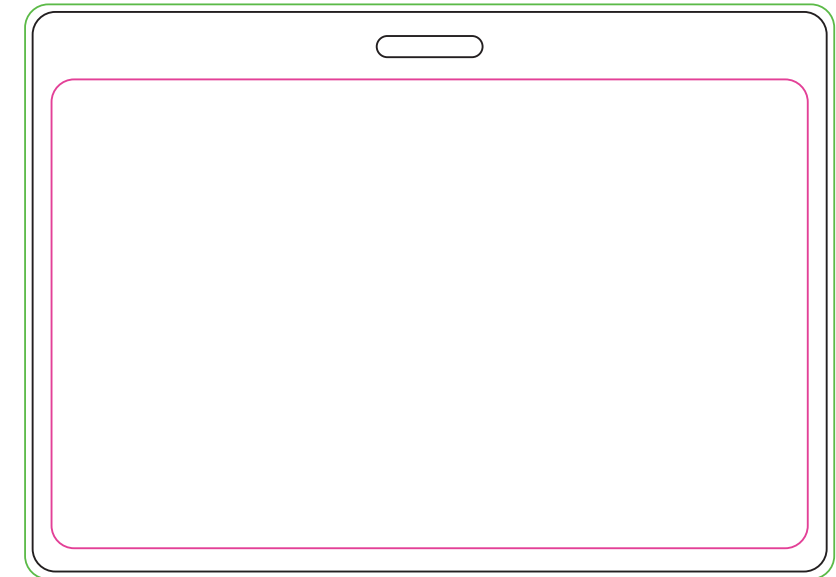
REV (if applicable)



FRONT



REV (if applicable)



Final Product Size- 105mm W x 74mm H

Pink Line\_ Critical imprint area  
Black Line\_ Final product size  
Green Line\_ Bleed print area

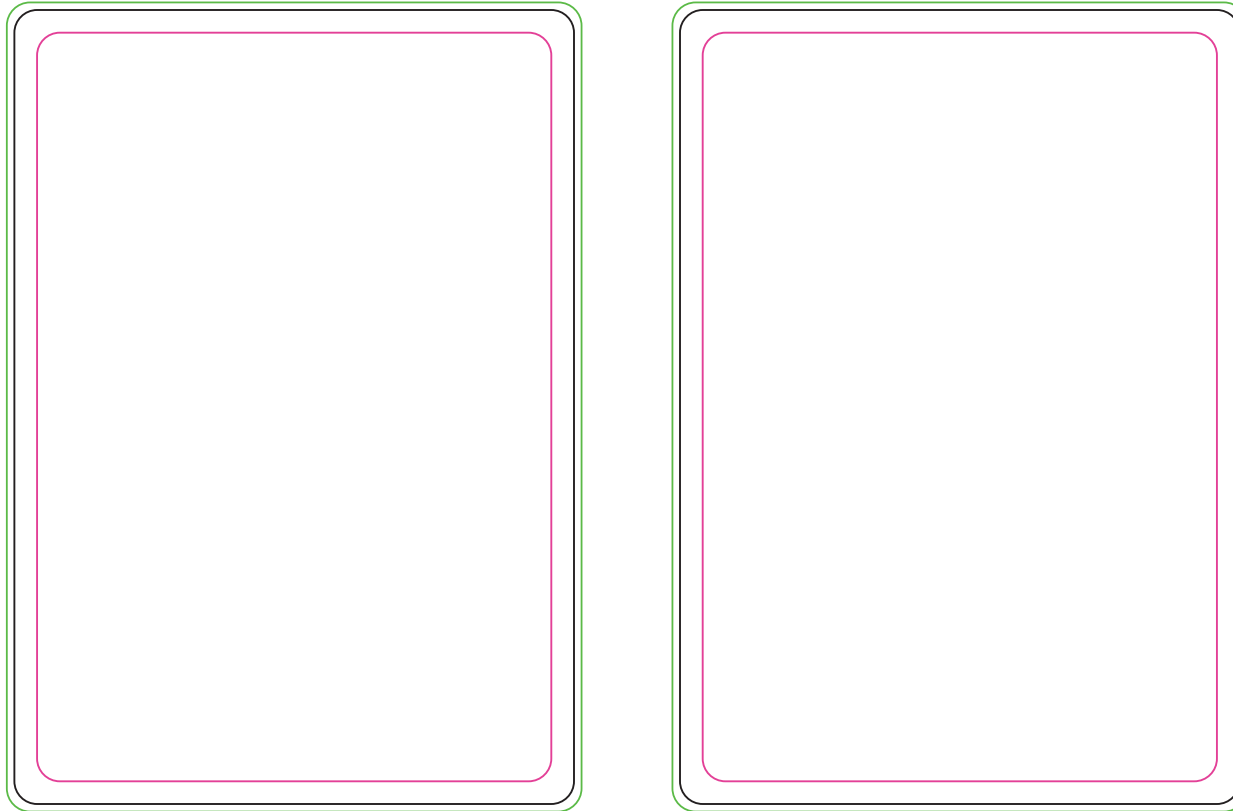
**Art shown @ 100%**

***The template is a GUIDE ONLY. Our graphics team will set up the print proof and make adjustments to ensure the highest quality.***

# #10 PTU016 Plastic Card PET Tag 74 x 105mm

FRONT

REV (if applicable)



Clip, Pin or Magnet or Card Only

Final Product Size- 74mm W x 105mm H

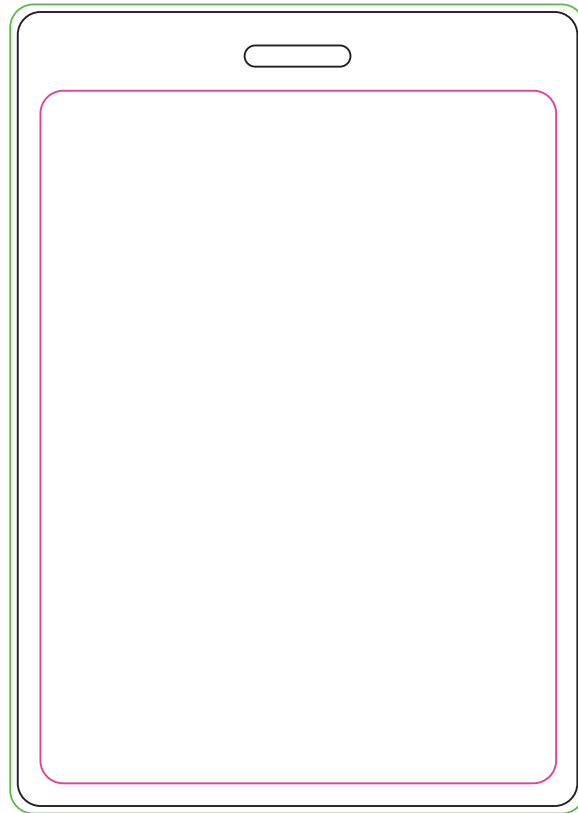
Pink Line\_ Critical imprint area  
Black Line\_ Final product size  
Green Line\_ Bleed print area

**Art shown @ 100%**

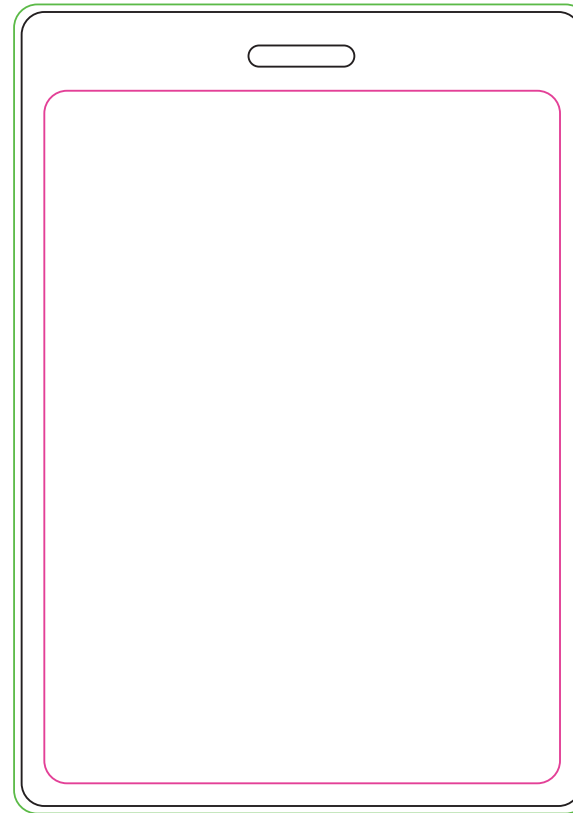
***The template is a GUIDE ONLY. Our graphics team will set up the print proof and make adjustments to ensure the highest quality.***

# #11 PTU016 Plastic Card PET Tag 74 x 105mm Slot

FRONT



REV (if applicable)



Final Product Size- 74mm W x 105mm H

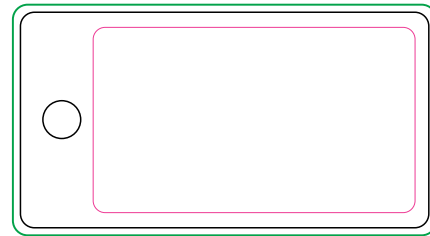
Pink Line\_ Critical imprint area  
Black Line\_ Final product size  
Green Line\_ Bleed print area

**Art shown @ 100%**

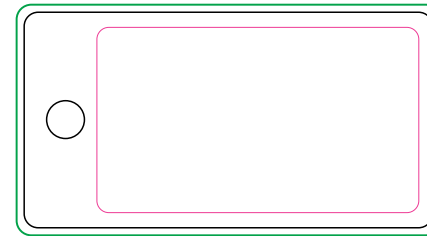
***The template is a GUIDE ONLY. Our graphics team will set up the print proof and make adjustments to ensure the highest quality.***

# #12 PTU017 Plastic PET KeyTag 28.5 x 54mm Hole

FRONT



REV (if applicable)



Final Product Size - 54mm W x 28.5 mmH

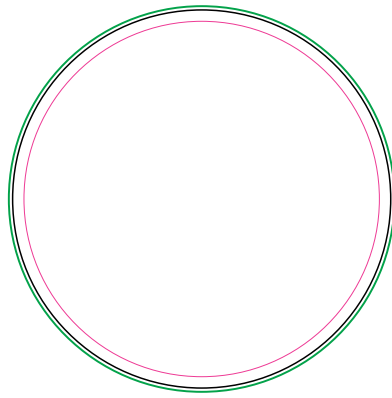
Pink Line\_ Critical imprint area  
Black Line\_ Final product size  
Green Line\_ Bleed print area

**Art shown @ 100%**

***The template is a GUIDE ONLY. Our graphics team will set up the print proof and make adjustments to ensure the highest quality.***

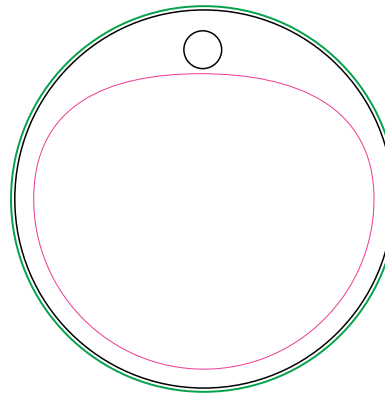
# #13 PTU018 Plastic PET Circle 50mm

FRONT



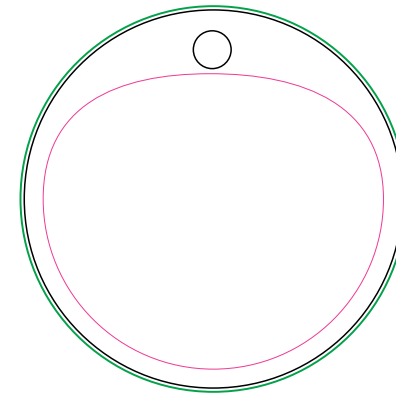
Clip, Pin or Magnet or Card Only

FRONT



Final Product Size - 50mm D

REV (if applicable)



Pink Line\_ Critical imprint area  
Black Line\_ Final product size  
Green Line\_ Bleed print area

**Art shown @ 100%**

***The template is a GUIDE ONLY. Our graphics team will set up the print proof and make adjustments to ensure the highest quality.***